

IMPORTANT: Read instructions before using and operating this device!

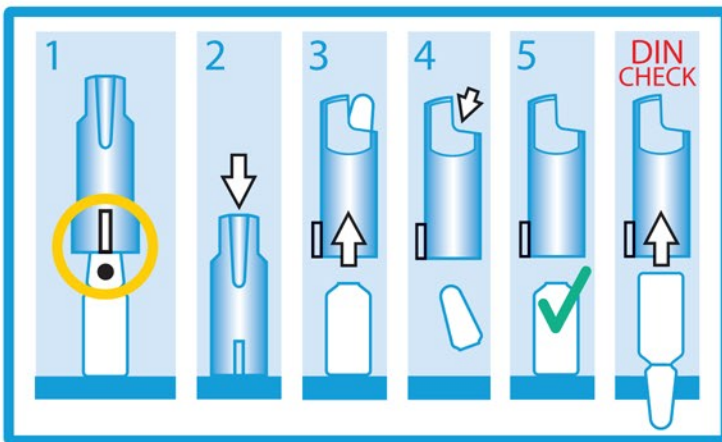
Caution

The sterile AO is sealed and marked as sterile. The non-sterile AO is unmarked. *Please contact us to order the sterile version.*

The AO is designed for DIN ampoules ONLY! Open non-DIN ampoules at your own risk.

Glass ampoules can break during opening.

Operating the AO



1. Take an AO matching the ampoule's size (in mL) and after placing the ampoule on sturdy surface, align the AO's raised tab with the ampoule's dot.
2. Slip the AO vertically over the ampoule and squarely press down until you hear/feel the ampoule break.
3. Squarely lift up the AO exposed the ampoule body.
4. Eject the ampoule head seated in the AO into a designated sharps/hazards container.
5. Confirm that the ampoule and AO are ready for next steps.

DIN CHECK: When using non-DIN ampoules (ampoules without a dot), begin by gently inserting the ampoule UPSIDE DOWN into the AO. Anything other than a snug but resistance-free fit indicates incompatibility. Do not use the AO to open this particular ampoule.

Sterilization/Cleaning & Use

AO can be sterilized by autoclave at 120° C (248° F) for 20 minutes. Dispose of the AO after 30 sterilization cycles. *Please contact us to order pre-sterilized AO ampoule openers.*

For optimal performance, it is recommended that the AO be replaced after 500 uses or 1 year, whichever ever comes first.

Wash the AO in warm soapy water free of abrasives as needed. Rinse thoroughly with clean water and air dry.

Ensure that the AO is free of obstructions before servicing, cleaning, storing, or otherwise handling.

Store the AO in a clean, cool, and dry location.

The AO is made of polypropylene (PP), please recycle accordingly.



Troubleshooting

Should the AO fail to open an ampoule:

Confirm that you are using the correct AO designed for the ampoule size you are opening (i.e. use the 1ml AO for a 1 ml DIN ampoule).

Check for and safely remove obstructions in the AO device.

Be sure that the raised tab on the bottom of the AO aligns with the dot marked on the DIN-compatible glass ampoule you are opening.

Ampoule without a dot may be incompatible with the AO. Confirm the ampoule is DIN ISO 9187-1/2 compatible and perform DIN CHECK.

Should you have any other questions or concerns please email AO at info@theampouleopener.com or call AO at 1-802-735-2557.